

Top Mount Clamp-on Multiport Valves

Replacement Parts for American Valves

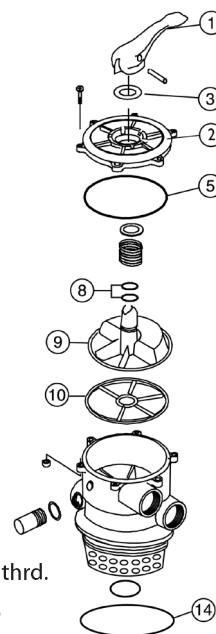


Item	Part No.	Description	US List	Can. List
6 POSITION TOP MOUNT CLAMP-ON MULTIPORT VALVE				
1	271156	Handle	27.69	28.52
2	98740900	Label multiport valve - 2 in. eclipse	CALL	CALL
3	51001400	Washer, poly	8.05	8.29
5	51002200	O-ring lid, 1-1/2 in. valve w/ label	13.46	13.86
8	191479	O-ring	1.11	1.14
9	51002800	Rotor 1-1/2 in.	67.42	69.44
9	51002900	Rotor 2 in.	70.62	72.74
10	271104	Gasket, spider, 1-1/2 in. valve	22.22	22.89
10	271148	Gasket, spider, 2 in. valve	31.99	32.95
14	51011900	O-ring, 22 in. filter ¹	7.43	7.65
14	51021700	Gasket, 22 in. filter ²	16.35	16.84
14	39300600	O-ring, 26 & 30 in. filter	17.24	17.76

¹ Used on valves manufactured before 1-95.

² Used on valves manufactured after 1-95.

Product on page 232.



P/N 50113100 1-1/2 in. thrd.

P/N 50123100 2 in. slip

Top Mount Clamp-on Multiport Valves

Replacement parts for American Valves

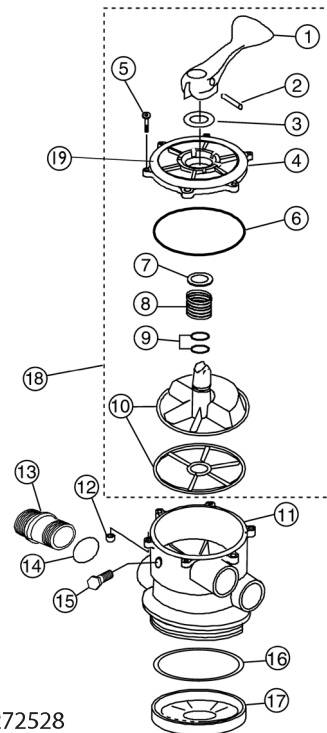


Item	Part No.	Description	US List	Can. List
5 & 8 POSITION TOP MOUNT CLAMP-ON MULTIPORT VALVE				
1	50131100	Handle, 8-pos.	28.27	29.12
2	50151400	Pin, handle	5.51	5.68
3	51025700	Washer, poly	7.43	7.65
4	50133100	Lid assy., 8-pos., w/ label	47.16	48.57
5	98209000	Screw 14-20 x 1-1/2 in., 6 req.	1.75	1.80
6	50151700	O-ring, lid	11.77	12.12
7	51021600	Washer	5.91	6.09
8	51000700	Spring	10.21	10.52
9	191479	O-ring, rotor, 2 req.	1.11	1.14
10	50131400	Rotor, spider gasket assy.	32.54	33.52
11	270099	Body-diffuser assy., 1-1/2 in.	68.63	70.69
11	51006900	Body-diffuser assy., 1-1/2 in. thrd., 26, 30 in. filter	64.17	66.10
12	98211400	Nut, 1/4 in. -20, 6 req.	2.18	2.25
13	85019000	Sight glass, 18, 20 in. sand filter	18.22	18.77
13	85019100	Sight glass, 22, 26 in. sand filter	18.22	18.77
14	50152300	O-ring, backwash sight glass	4.39	4.52
15	98206400	Plug, 1/4 in. NPT w/ O-ring	3.19	3.29
16	51021700	Gasket, 18, 20, 22 in. sand filter	16.35	16.84
16	39300600	O-ring, 26, 30 in. sand filter	17.24	17.76
17	51030000	Diffuser, 18, 20, 22 in. sand filters	12.71	13.09
18	272528	Top Valve Assy.	131.11	135.04
19	96734200	Label multiport valve 8 pos.	CALL	CALL

Product on page 232.

5 Position Product No.: 50115100

8 Position Product Nos.: 50118100, 50118200, & 50118300



P/N 272528