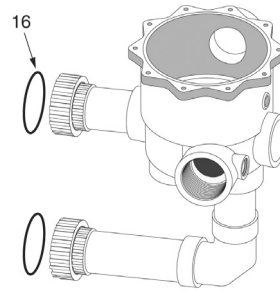
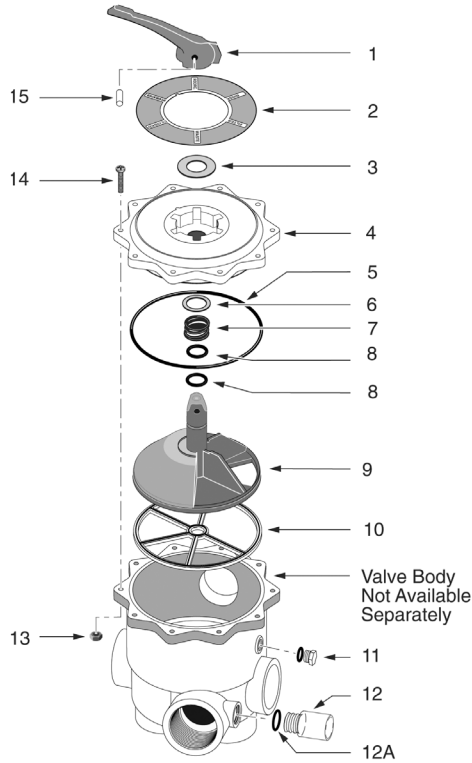


# Multiport Side Mount 1-1/2 & 2 in. Valves

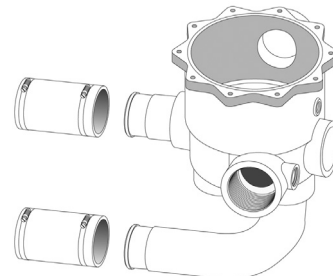
## Replacement Parts for Sta-Rite Valves



**MODELS**  
 18202-0150  
 18202-0150H  
 18201-0200  
 18201-0200H  
 18201-0300  
 18202-0250



Models 18202-0150, 18201-0200, and 18201-0300 include union halves as shown.



Models 18202-0150H and 18202-0200H require hose connector kits.

Item	Part No.	Description	US List	Can. List
<b>MULTIPORT SIDE MOUNT 1-1/2 &amp; 2 IN. VALVE</b>				
1	14971-SM10E1	Handle	33.76	34.77
2	32155-4136	Label Decal (2 in. Valve) (18201-0200 & 18201-0200H)	CALL	CALL
2	32155-4133	Label Decal (1.5 in. Valve) (18202-0150 & 18202-0150H)	CALL	CALL
2	32155-4171	Label Decal (1.5 in. Valve) (18202-0250)	CALL	CALL
3	14971-SM10E3	Washer	9.65	9.94
4	14971-SM10E6	Valve Cover (1-1/2 in. Valve)	61.64	63.49
4	14971-SM20E6	Valve Cover (2 in. Valve)	50.57	52.09
5	14971-SM10E7	Cover O-Ring (1-1/2 in. Valve)	16.14	16.62
5	14971-SM20E7	Cover O-Ring (2 in. Valve)	14.34	14.77
6	14971-SM10E8	Washer	9.65	9.94
7	14971-SM10E9	Spring	42.15	43.41
8	14971-SM10E10	O-Ring	8.41	8.66
9	14971-SM10E11	Plug (1-1/2 in. Valve)	55.18	56.84
9	14971-SM20E11	Plug (2 in. Valve)	52.54	54.12
10	14971-SM10E12	Spider Gasket (1-1/2 in. Valve)	16.85	17.36
10	14971-SM20E12	Spider Gasket (2 in. Valve)	37.93	39.07
11	U178-920P	1/4 in. NPT Plug w/O-Ring	2.84	2.93
12	14971-SM10E17	Sight Glass	14.62	15.06
12A	14971-SM10E16	Sight Glass Gasket	5.36	5.52
13	14971-SM10E14	Nut (6 for 1-1/2 in., 10 for 2 in.)	2.27	2.34
14	14971-SM10E4	Bolt (6 for 1-1/2 in., 10 for 2 in.)	3.40	3.50
15	14971-SM10E2	Handle Pin	13.64	14.05
16	U9-362	O-Ring (-0150, -0200 only)	4.32	4.45